

Astra Wash19PixIP

IP65 moving wash light with 19x40W RGBW LED and 4°-54° zoom

ORDER CODE: **ASTRAWASH19PIXIP**



The **Astra Wash19PixIP** is an IP65 LED moving wash light designed to be a workhorse for any large, outdoor stage or installation, offering a robust and sealed mechanical assembly but keeping the same features and performance as its indoor version. This moving washlight has a 19x40W Osram RGBW LED light source and an extremely-high-efficiency optical system capable of zooming from 4° to 54°, making this luminaire very versatile for any application, as aerial FX or wash light. The **Astra Wash19PixIP** is single pixel controllable, with multiple on-board FX and has precise and advanced white and colour control, all through DMX/RDM, CRMX+W-DMX, Art-Net and sACN.

MAIN FEATURES

- IP65 with a compact form factor and fast movements
- Zoom from 4° to 54° with a high-optical efficiency
- Pixel control, precise white CCT, multiple FXs and colour features

TECHNICAL SPECIFICATION

LIGHT SOURCE

- Source:19x40 W RGBW Osram Ostar LEDs
- Luminous flux:(4°) 5'505 lm - (54°) 10'143 lm @full
- Lux:(4°) 45'146 lx - (54°) 1174 lx @5 m full
- Other:outer RGB pixel ring with frost film
- Source life expectancy: > 50.000 h

OPTICS

- Zoom:4° - 54 ° motorised linear zoom
- Lens type: honeycomb gapless plano-convex optics
- Additional optics:optics: diffuser on outer pixel ring

COLOUR SYSTEM

- Colour mixing: RGBW / FC
- CCT: CCT control, + / - green correction, tungsten emulation
- White presets:2.800 K ~ 10.000 K
- Colour wheel: virtual colour wheel with macros
- Macros: several pre-built pixel macros with adjustable speed

DYNAMIC EFFECTS

- Control Resolution: 16-bit dimmer, colours
- Pixel patterns: pre-programmed dynamic and static patterns
- FX generator: adjustable foreground/background colour, index, speed, direction
- Special features:outer RGB, pixel ring with several built in FX macros and linear crossfade channel from any white to any colour; virtual CTO on colours

BODY

- Hardware on-board: sockets for quick-Lock Omega bracket (clamp not included)
- Pan angle:540 °
- Tilt angle:233 °
- Feedback: automatic repositioning after accidental movement
- Body: weatherproof IP65 construction
- Body colour: RAL 9004

CONTROL

- Protocols: DMX512, RDM, Art-Net, Klingnet, sACN, W-DMX

ACCESSORIES & RELATED PRODUCTS

- | | |
|--------------------|---|
| ▪ 9313FXWL03 | Ass. 3x2.5mm TH07 cable, 16A 3p 230V CEE plug, SETSAC3FX socket, L.3 m |
| ▪ 9333FXWL03 | Ass. 3x2.5mm TH07 cable, SHUKO plug, SETSAC3FX socket, L.3m |
| ▪ 938225L03 | 3x2.5mm TH07 Cable, 16A SETSAC3MX, 16A SETSAC3FX, L. 3m |
| ▪ C6002B | Slim aluminum clamp, 200kg loading, 48-51mm tubes, M10 bolt, Black |
| ▪ FLA STRAW19PIXIP | Flight case for 6 pcs of ASTRAWASH7PIXIP |
| ▪ INF53415L03 | Dmx cable HC5340. SETMCSMXXB XLR 5p->SETMCSFXXB XLR (f) 5p L.3m |
| ▪ RSR0630B | Steel security cable for hanging bodies, inox steel shackle, L=60 cm, black |

- DMX channels:main personality 29 / 32 / 53 channel
- Pixel control: OFF, ring and pixel2pixel
- Wireless Control: included, LumenRadio Timo Fx DMX/RDM compatible with both CRMX (Lumen Radio) and W-DMX (Wireless DMX)
- RDM: RDM for remote monitoring and settings
- Display: LCD high resolution colour display with autoflip
- Firmware upgrade: yes, via USB - DMX interface (UPBOX2) not included

ELECTRONICS

- Dimmer: linear 0 ~ 100% electronic dimmer
- Dimmer curves:4 selectable dimming modes available
- Strobe / shutter:1 - 30 Hz, electronic
- Display battery: self-charging battery backup
- Operating temperature: -20° ~ +45°
- LED Control: flicker free operation
- Selectable PWM: 600 ~ 50.000 Hz

ELECTRICAL

- Mains power supply: 100-240V - 50/60Hz
- Max power consumption:750 W
- Output (at 230V):3 units on a single power line
- Power factor:> 0,95

PHYSICAL

- IP rating:65 for temporary outdoor use (*)
- Cooling: forced air with fan
- Suspension and fixing: any position with quick-lock omega brackets
- Pan / tilt lock: for transportation and maintenance
- Signal connection: Amphenol XLR 5p IN/OUT connectors
- Data connection:Neutrik Art-Net RJ45 IN/OUT
- Power connection: Seetronic powerCON TRUE IP65 IN/OUT
- Dimensions (WxHxD):457x578x266 mm
- Weight:25 kg
- (*) NOTE: Suitable for permanent outdoor use, provided installation and maintenance cycles by qualified technicians are carried.

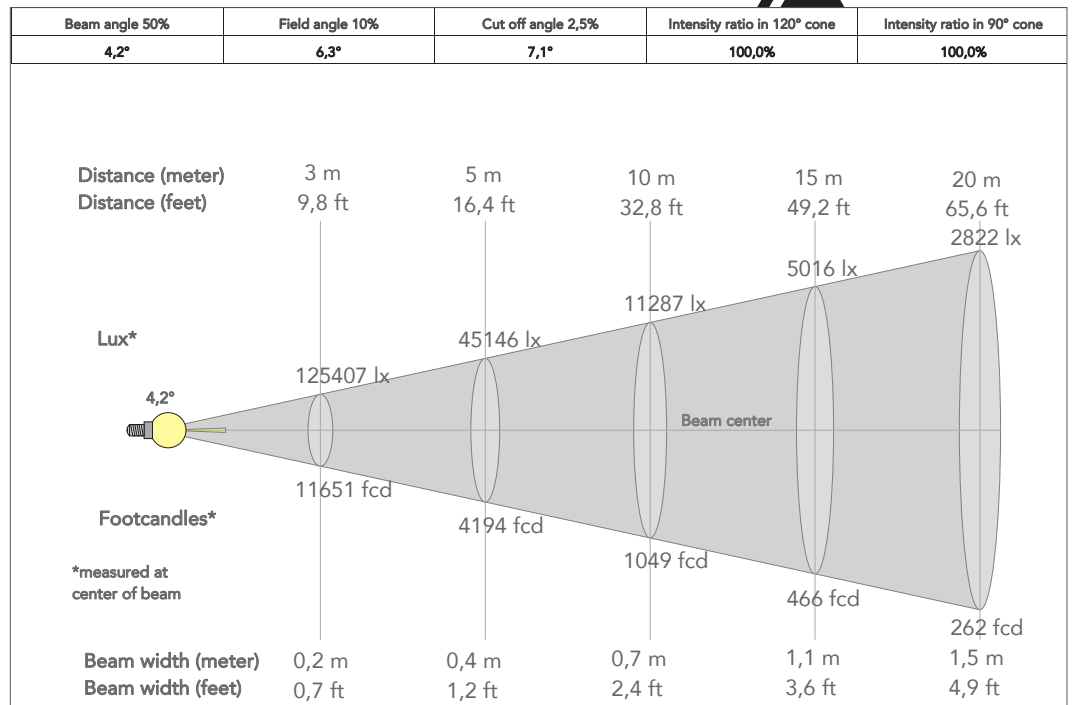
CERTIFICATIONS / APPROVALS

- Certifications / Approvals: CE, UKCA, RCM

- | | |
|----------------|---|
| ▪ WSBBF1G5 | BlackBox F-1 G5 transmitter, 2,45GHz & 5.2/5,8 GHz, DMX/RDM, 512Ch |
| ▪ WSBBF1G6 | BlackBox F-1 G6 transrec, 512ch, 2.45GHz, DMX&RDM,Bluetooth,G3,G4,G4S, G5, CRMX |
| ▪ WSBBR512G5 | BlackBox R-512 G5 receiver 512Ch, 2,45GHz & 5.8GHz, DMX/RDM optional |
| ▪ WSBBR512G6 | BlackBox R-512 G6 receiver 512Ch, 2.45GHz,DMX&RDM,Bluetooth,G3,G4,G4S,G5,CRMX |
| ▪ ASTRAW19MBCR | Matt black cover for ring for ASTRAWASH19PIX and ASTRAWASH19PIXIP |
| ▪ OSIP | IP65 quick-lock omega bracket compatible with IP65 moving heads |
| ▪ IPTESTBOX | Portable vacuum and pressure tester for ProLights IP fixtures |
| ▪ UPBOX2 | Firmware uploader kit, USB IN, 3-pin XLR DMX OUT |

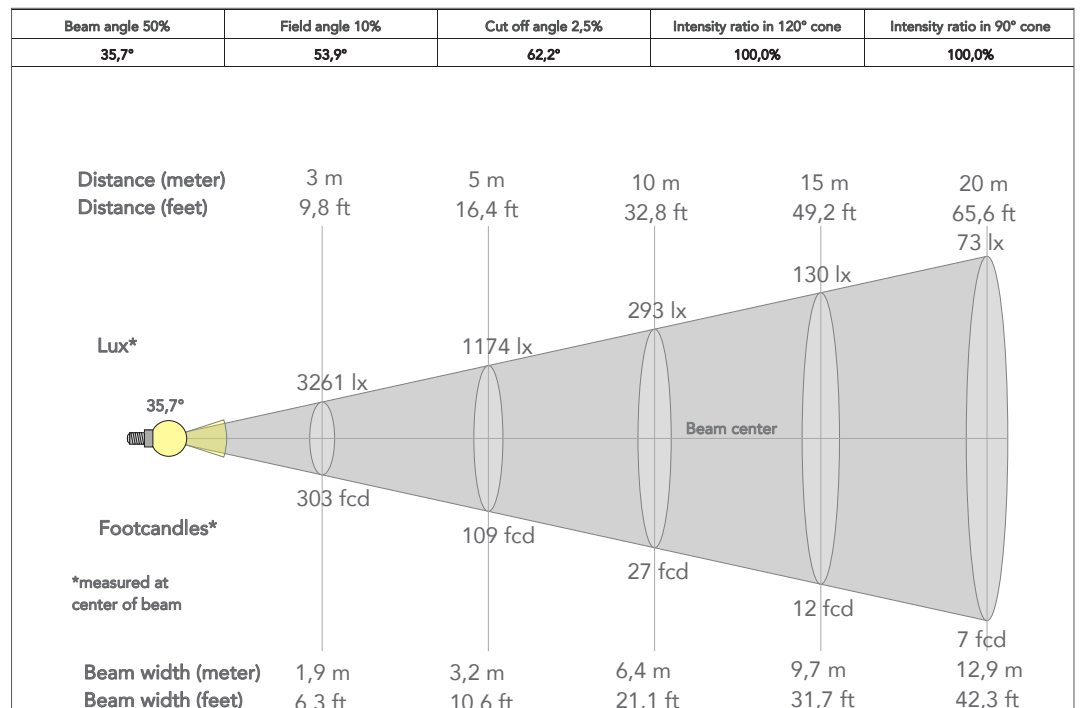
PRESET FULL ON

Beam angle 50%: 4°

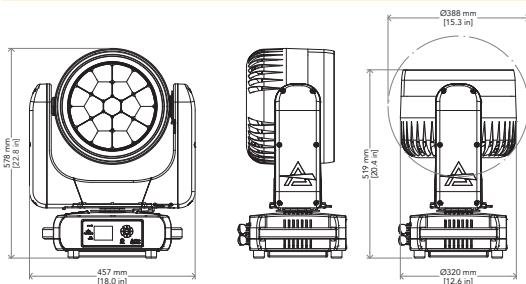


PRESET FULL ON

Beam angle 50%: 35°



TECHNICAL DRAWINGS



CERTIFICATIONS / APPROVALS



Conforms to UL STD. 1573
Certified to CSA STD: C22.2 NO. 166

Visit our website for specifications and tech documentations

