

Astra PAR7ZIP

7x40W IP65 RGB+WW zoom LED PAR with pixel control



Astra Par7ZIP is a bright IP65 rated LED zoom PAR featuring a 7x40W RGB + WarmWhite LED source delivering phenomenal output and great flexibility for both indoor and outdoor application. Its Spektra calibrated LED source delivers a high-quality white reproduction with high CRI and TLCI scores as well as an extremely precise colour tuning.

Astra Par7ZIP is truly focusable through the motorized zoom system ranging from 4.5° to 53°, being a truly versatile workhorse for any application requiring an advanced control of the light and weatherproof. The on board CRMX transceiver card allow also a simplified wiring and remote wireless control of the unit.

Astra Par7ZIP is single pixel controllable, with multiple on-board FX, and allows access to a precise and advanced white and colour control, all through DMX, CRMX+W-DMX and RDM.

MAIN FEATURES

- 7x40W Spektra calibrated RGB + Warm White LED delivering high CRI, TLCI, TM30 values
- 4.5° to 53° motorized linear zoom
- Pixel control, precise white CCT and multiple FXs and colour features
- IP65 for exterior application, with CRMX wireless transceiver on-board

VERSIONS

Code	Housing
ASTRAPAR7ZIPBK	Black
ASTRAPAR7ZIPWH	White

TECHNICAL SPECIFICATION

LIGHT SOURCE

- Source:7x40 W RGB + Warm White LED
- Luminous flux:preliminary data: (4,5°) 1'513 lm - (53°) 2'604 @full
- Lux:preliminary data: (4,5°) 12'541 lx - (53°) 304 lx @5 m full
- CRI:preliminary data: 94,8 @ 3'200K; 92,9 @ 5'600K
- R9:preliminary data: 97,6 @ 3'200K; 79,8 @ 5'600K
- Source life expectancy: > 50.000 h

OPTICS

- Zoom:4,5° - 53 ° motorised linear zoom
- Lens type: honeycomb gapless plano-convex optics

COLOUR SYSTEM

- Colour mixing: RGBW / FC
- CCT: CCT control, + / - green correction, tungsten emulation
- White presets:2.800 K ~ 10.000 K
- Colour wheel: gel filters included
- Macros: several pre-built pixel macros with adjustable speed

DYNAMIC EFFECTS

- Control Resolution: 16-bit dimmer
- Pixel patterns: pre-programmed dynamic and static patterns
- FX generator: adjustable foreground/background colour, index, speed, direction
- Special features: linear crossfade channel from any white to any colour; virtual CTO on colours

BODY

- Body: weatherproof IP65 construction
- Body colour: RAL 9004
- Other:Front mount holder for accessories as Barndoor, filterframe

CONTROL

- Protocols: DMX512, RDM, CRMX
- DMX channels:1 / 2 / 6 / 12 / 14 / 21 / 33 channel
- Pixel control:OFF, ring and pixel2pixel selectable options
- Wireless Control: included, LumenRadio Timo Fx DMX/RDM compatible with both CRMX (Lumen Radio) and W-DMX (Wireless DMX)
- RDM: RDM for remote monitoring and settings
- Display: LCD high resolution colour display
- Firmware upgrade: yes, via USB - DMX interface (UPBOXPRO/UPBOX2) not included

ELECTRONICS

- Dimmer: linear 0 ~ 100% electronic dimmer
- Dimmer curves:4 selectable dimming modes available
- Strobe / shutter:1 - 30 Hz, electronic
- Display battery: self-charging battery backup
- Operating temperature: -20° C / +45° C (-4° F / +113° F)
- LED Control: flicker free operation
- Selectable PWM: 600 ~ 50.000 Hz

ELECTRICAL

- Mains power supply: 100-240V - 50/60Hz
- Max power consumption:263 W
- Output (at 230V):8 units on a single power line
- Power factor:> 0,93
- Inrush current:<30A @115VAC /<50A @230VAC

PHYSICAL

- IP rating:65 for outdoor installations
- Cooling: active, silent operation
- Suspension and fixing: double hanging bracket suitable for safe hanging and for floor positioning
- Signal connection: Seetronic XLR 5p IN/OUT connectors
- Power connection: Seetronic powerCON TRUE IP65 IN/OUT
- Dimensions (WxHxD):291x347x300 mm
- Weight:(TBC) 9,3 kg
- (*) NOTE: Suitable for permanent outdoor use, provided installation and maintenance cycles by qualified technicians are carried.

CERTIFICATIONS / APPROVALS

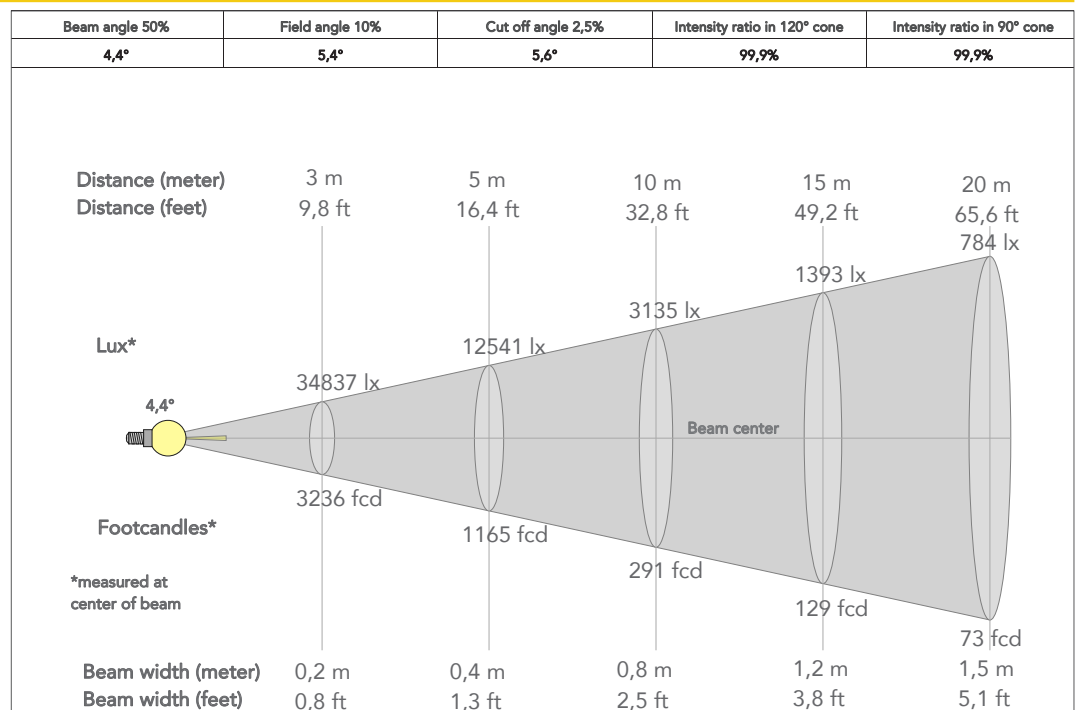
- Certifications / Approvals: CE, UKCA, RCM, cTUVus, FCC

ACCESSORIES & RELATED PRODUCTS

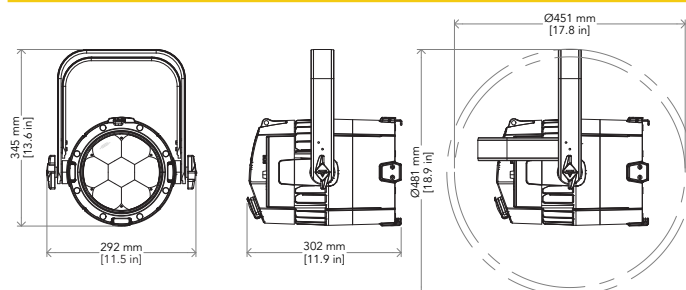
- AJP7ZIPBAG1U Empty ABS case for 1 pc of ASTRAPAR7ZIP or JETPAR7ZIP
- FCLAJP7ZIP Flight case for 6 pcs ASTRAPAR7ZIP / JETPAR7ZIP
- AJP7ZIPBDBK Barn door with 8 directional flaps to adjust the light beam
- AJP7ZIPFFBK Filter frame for ASTRAPAR7ZIP e JETPAR7ZIP
- IPTESTBOX Portable vacuum and pressure tester for ProLights IP fixtures
- C6002B Slim aluminum clamp, 200kg loading, 48-51mm tubes, M10 bolt, Black
- RSR0670B Steel security cable for hanging bodies, inox steel shackle, L=60 cm, black
- 9333FXWL03 Ass. 3x2.5mm TH07 cable, SHUKO plug, SETSAC3FX socket, L.3m
- 9313FXWL03 Ass. 3x2.5mm TH07 cable, 16A 3p 230V CEE plug, SETSAC3FX socket, L.3 m
- 938225L03 3x2.5mm TH07 Cable, 16A SETSAC3MX, 16A SETSAC3FX, L. 3m
- INF53415L03 Dmx cable HC5340. SETMC5MXXB XLR 5p->SETMC5FXXB XLR (f) 5p L.3m
- LRLUNA Single Universe DMX transceiver with Bluetooth
- SPGM10 28mm spigot for fixtures, M10 bolt
- SPGM12 28mm spigot for fixtures, M12 bolt
- UPBOXPRO Firmware uploader kit, USB IN, 5-pin XLR DMX OUT connector
- UPBOX2P5 Firmware uploader kit, USB IN, 5-pin XLR DMX OUT

PRESET FULL ON

Beam angle 50%: 4,4°



TECHNICAL DRAWINGS



CERTIFICATIONS / APPROVALS



Conforms to UL STD. 1573
Certified to CSA STD: C22.2 NO. 166

Visit our website
for specifications and
tech documentations

